

Centennial to millennial variability of greenhouse climate across the mid-Cenomanian event

Chao Ma^{1*}, Linda A. Hinnov², James S. Eldrett³, Stephen R. Meyers⁴, Steven C. Bergman³, Daniel Minisini^{3,5} and Brendan Lutz³

¹Institute of Sedimentary Geology, State Key Laboratory of Oil and Gas Reservoir Geology and Exploitation, Chengdu University of Technology, Chengdu 610059, China

²Department of Atmospheric, Oceanic, and Earth Sciences, George Mason University, Fairfax, Virginia 22030, USA

³Shell International Exploration and Production, 3333 HW6 S, Houston, Texas 77082, USA

⁴Department of Geoscience, University of Wisconsin–Madison, Madison, Wisconsin 53706, USA

⁵Department of Earth, Environmental and Planetary Sciences, Rice University, Houston, Texas 77005, USA

ABSTRACT

Centennial- to millennial-scale climate variations are often attributed to solar forcing or internal climate system variability, but recognition of such variations in the deep-time paleoclimate record is extremely rare. We present an exceptionally well-preserved, millimeter-scale laminated marlstone from a succession of precession-driven limestone-marlstone couplets deposited in the Western Interior Seaway (North America) immediately preceding and during the Cretaceous mid-Cenomanian event (ca. 96.5 Ma). Sedimentological, geochemical, and micropaleontological data indicate that individual pairs of light-dark laminae record alternations in the extent of water-column mixing and oxygenation. Principal component analysis of X-ray fluorescence element counts and a grayscale scan of a continuous thin section through the marlstone reveal variations with 80–100 yr, 200–230 yr, 350–500 yr, ~1650 yr, and 4843 yr periodicities. A substantial fraction of the data indicates an anoxic bottom water variation with a pronounced 10,784 yr cycle. The centennial to millennial variations are reminiscent of those found in Holocene total solar irradiance variability, and the 10,784 yr anoxia cycle may be a manifestation of semi-precession-influenced Tethyan oxygen minimum zone waters entering the seaway.

INTRODUCTION

Climate change models with elevated atmospheric CO₂ indicate that natural forcing contributions from total solar irradiance (TSI) variations are likely to be small (Myhre et al., 2013). However, modeling suggests that TSI variations have the potential to influence ocean temperature (Seidenglanz et al., 2012). TSI variations occur across centennial to millennial (C-M) time scales, although knowledge is limited by the availability of data. Holocene solar activity proxies reveal variations that include the Schwabe (11 yr), Gleissberg (80–100 yr), de Vries-Suess (200–250 yr), Eddy (~1000 yr), and Halstatt (or Bray) (~2400 yr) cycles (Usoskin, 2017). Importantly, these cycles intersect frequency

bands of unforced internal climate oscillations generated by global climate models (Dijkstra and von der Heyt, 2017; von der Heydt et al., 2021). A fundamental question is whether C-M paleoclimate variability reflects responses to unforced internal climate oscillations and/or forcing from TSI variations.

There is a rapidly growing database of Holocene C-M paleoclimate records, from tree rings, speleothems, ice, and varved lake and marine sediment sequences (<http://pastglobalchanges.org/data/databases>). Many of these records exhibit cycles with periodicities reminiscent of those of the solar activity proxies indicated above. In contrast, pre-Holocene C-M paleoclimate records from sediment are exceedingly rare, due to low sediment accumulation rates, postdepositional mixing, incomplete preservation, and the lack of precise chronologies.

We investigated C-M paleoclimate variability immediately preceding and during the lower part of the mid-Cenomanian event (MCE; ca. 96.6–96.2 Ma; Eldrett et al., 2015a), a “greenhouse” period characterized by high atmospheric CO₂ concentrations (500–1500 ppmv) and warm global sea-surface temperatures (>35 °C; Wang et al., 2014; O’Brien et al., 2017). Our goal was to characterize C-M variability in the climate system from the marine perspective, compare its spectral features with the Holocene TSI record, and gauge the relative contributions of external TSI forcing versus internal climate variability.

DATA AND METHODS

The C-M paleoclimate record examined in this study is from the Shell Iona-1 research core (west Texas), located in the southern gateway of the Cretaceous Western Interior Seaway (KWIS, North America; Fig. S1 in the Supplemental Material¹). The studied interval is characterized by suboxic-anoxic depositional conditions under a restricted and stratified water column (Eldrett et al., 2017), which experienced temporary photic zone euxinia (Sun et al., 2016). Meter-scale alternations in redox state are also recorded between limestone (L) and marlstone (M) beds, with L-beds reflecting periods of greater water-mass ventilation and current activity in response to precession forcing (Eldrett et al., 2015a, 2015b). We analyzed nine M-beds (M1–M3, M6–M11) spanning just prior to and across the lower part of the MCE interval. (Fig. S2). Within each M-bed, millimeter-scale light-dark laminae have been preserved. Sedimentation rates for

*E-mail: machao@cdu.edu.cn

¹Supplemental Material. Background of the studied interval, time series analysis of the grayscale of the marls, micropaleontology, and supplemental figures and tables. Please visit <https://doi.org/10.1130/G48734.1> to access the supplemental material, and contact editing@geosociety.org with any questions.

CITATION: Ma, C., et al., 2022, Centennial to millennial variability of greenhouse climate across the mid-Cenomanian event: *Geology*, v. 50, p. 227–231, <https://doi.org/10.1130/G48734.1>

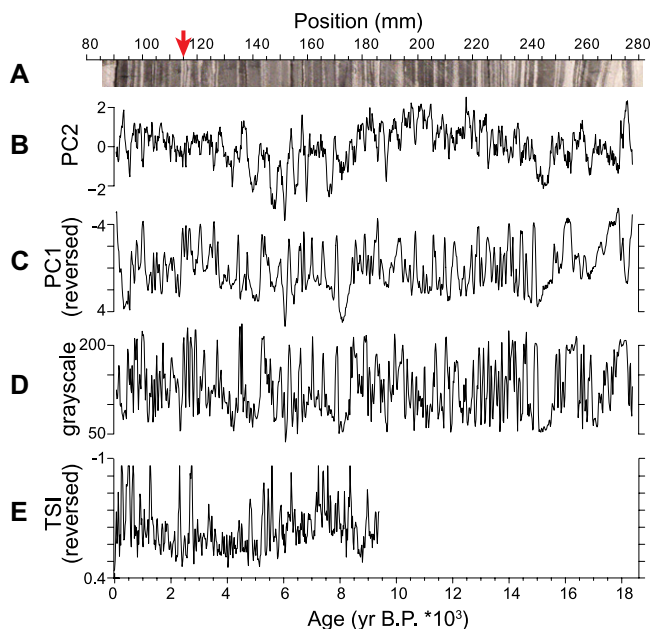


Figure 1. Data from the studied interval in the Cretaceous Western Interior Seaway, North America. (A) Continuous thin section of marlstone bed M11; red arrow indicates location of thin section displayed in Figure 3. (B) Principal component 2 (PC2). (C) Principal component 1 (PC1). (D) Grayscale scan of the continuous thin section shown in A. (E) Total solar irradiance (TSI) reconstructed for 0–9400 yr B.P. (Steinhilber et al., 2013). Sedimentation rate of 1.02 cm/k.y. was applied to the M11 stratigraphic scale (top) to obtain a time scale (bottom): yr B.P. for TSI, and elapsed years for core data.

these nine M-beds were obtained by Ma et al. (2020); the time interval represented by M11, selected for more detailed analyses, was estimated as 18.933 k.y., with a sedimentation rate of 1.02 cm/k.y. (Ma et al., 2020).

We conducted detailed petrographic and micropaleontological analyses on M11 (Fig. 1; Figs. S4 and S5). Major and minor elements were measured using an X-ray fluorescence (XRF) device on an Itrax core scanner at 200 μm resolution ($\Delta t = \sim 20$ yr; Fig. S6) at the National Oceanography Centre, University of Southampton, Southampton, UK. Grayscale data were measured at 230 μm resolution ($\Delta t = \sim 23$ yr) along the image shown in Figure S2.

Principal component analysis (PCA; *prcomp* function in R, <https://www.rdocumentation.org/packages/stats/versions/3.6.2/topics/prcomp>) was conducted on six major elements (Ca, Si, Fe, K, Ti, and S). Multitaper power spectral analysis with classical red noise modeling and harmonic F-ratio testing was applied with three 2π prolate tapers to evaluate significant cycles in the time series shown in Figure 1. (Scripts are available at: <http://mason.gmu.edu/~lhinnov/cyclostratigraphytools.html>.)

We then compared the M11 time series with the Holocene TSI time series for the past 9400 yr (Steinhilber et al., 2013) to determine similarities and/or differences among the records.

RESULTS

Sedimentology

The M11 succession represents mainly hemipelagic deposition. M11 preserves millimeter-scale alternations between white to light-gray carbonate-rich laminae (termed “light”) and dark-gray to black organic carbon-rich laminae with 4–16 wt% total organic carbon (termed “dark”). The light laminae are composed pri-

marily of foraminifera, whereas dark laminae are composed of abundant fecal pellets, some foraminifera, and a lack of bioturbation features. Very few light-dark laminae sets exhibit internal truncations, downlapping structures, and/or low-angle ripples that would indicate advective sediment transport, and so they are interpreted as single bed-load depositional events (Minisini et al., 2018). Erosional surfaces at the bases of light laminae were not observed to cut through multiple laminae, indicating limited impact of hiatuses on the time-series analysis.

Micropaleontology

The light laminae contain diverse assemblages of foraminifera including larger adult-sized and smaller juvenile-sized *Hedbergellids* and *Heterohelicids* from the upper mixed layer, *Whiteinellids* (lower mixed layer), and *Rotali-porids* (deep dwellers from within or below the thermocline; Gebhardt et al., 2010) combined with minor occurrences of calcispheres, inoceramids, crinoids, and colophane (Fig. S5). The dark laminae contain rare benthic foraminifera, and low-diversity planktonic foraminifera assemblages dominated by juveniles of the r-strategist (capable of large population increases in a short period of time) *Heterohelicid*. The mixed grain-size population of planktonic foraminifera in the light to dark laminae sets is not consistent with hydrodynamic sorting associated with event deposition and bed-load advective transport.

Geochemistry

The light laminae are relatively enriched in Ca, are depleted in the other five major elements (Fig. S6), and have low concentrations of redox-sensitive trace metals and slightly increased Mn compared to the dark laminae (Fig. S7). The

dark laminae are relatively depleted in Ca, are enriched in the other five major elements (Fig. S6), and contain relatively high abundances of redox-sensitive trace metals V and Ni (Fig. S7).

Principal Component Analysis (PCA)

The first two principal components account for 68.6% (PC1) and 17.2% (PC2); i.e., a total of 85.8% of the total variance (Fig. S8b). For PC1, the six elements have comparable loadings in terms of absolute values, but with a negative Ca loading (high Ca with low PC1, where PC1 is interpreted as a signal of carbonate productivity; Figs. S8a and S8c). In the PC2 axis (Figs. S8a and S8c), Ca and Ti are almost zero; Fe and S have negative loading values; and Si and K have positive loading values. These results suggest that PC2 is associated with redox elements (Fe and S) versus terrigenous elements (Si and K).

Spectral Analysis

The M11 proxy power spectra are arranged in order of increasing high-frequency power contributions (Fig. 2; Figs. S9–S11). PC2 has the simplest spectrum, dominated by a 10,784 yr (110 mm) cycle and a low-power 412 yr (4.2 mm) cycle. PC1 expresses a 398 yr (4.06 mm) cycle, with lower power from 316 yr (3.22 mm) to 198 yr (2.02 mm), and still lower power from 167 yr (1.70 mm) to 109 yr (1.11 mm). High-power peaks at 1647 yr (16.8 mm) and 4843 yr (49.4 mm) do not exceed the 99% significance level for red noise. The grayscale spectrum has sharp peaks at 393 yr (4.01 mm), 211 yr (2.15 mm), 168 yr (1.71 mm), and 127 yr (1.30 mm), a high-power peak at 1686 yr (17.2 mm), and another peak at lower power at 906 yr (9.24 mm), neither exceeding the 99% significance level. The grayscale spectrum resolves variability out to 78 yr (0.80 mm) cycles and is not as “red” as the PC1 spectrum. Finally, the TSI spectrum has a large peak at 203 yr and lower-power peaks in the band from 151 yr to 87 yr. Peaks at periods longer than 203 yr do not exceed the 99% significance level. Spectral analyses on eight M-beds above M11 also showed ~ 2 mm cycles that represent an ~ 200 yr cycle (Fig. S3; Tables S1 and S2). Furthermore, a simple analysis of number of laminae pairs (average thickness 1.96–2.34 mm) in each M-bed suggests that the duration of the individual laminae pairs is ~ 200 yr (Table S1).

DISCUSSION

Ocean Environment

The light laminae contain foraminifera assemblages that are interpreted to occupy habitats throughout the water column, suggesting relatively oxygenated, biologically favorable environmental conditions within the water column. Low concentrations of redox-sensitive trace metals and slightly increased manganese also point to oxygenated environmental

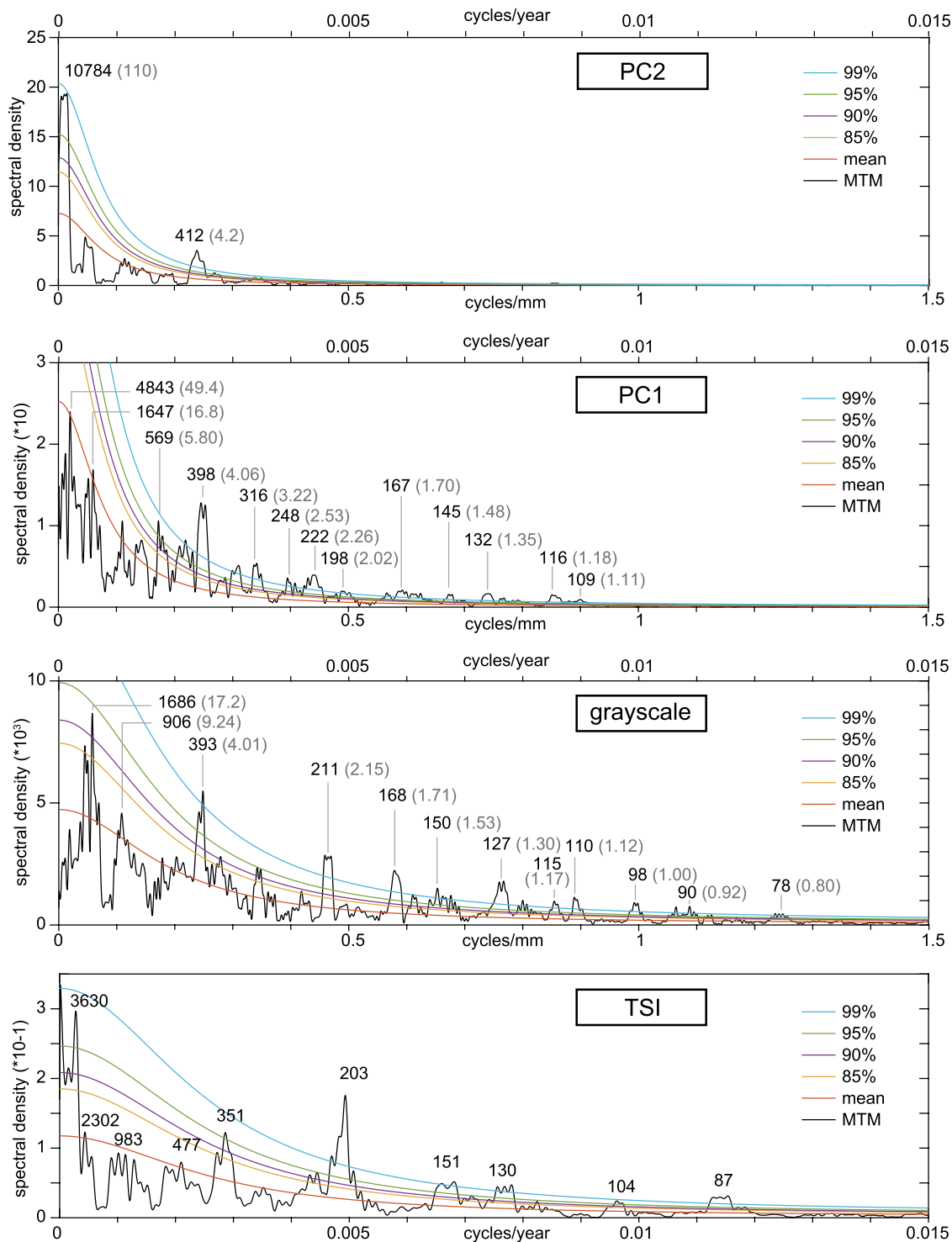


Figure 2. Power spectra of principal component 2 (PC2), principal component 1 (PC1), grayscale, and total solar irradiance (TSI) time series. Black numbers indicate period in years, and gray numbers indicate thickness in millimeters. Colored lines indicate significance levels for conventional first-order autoregressive [AR(1)] noise models of the time series. MTM—multitaper method. Supporting harmonic analysis and F-testing results are provided in Figures S9–S11 (see footnote 1).

conditions. The dark laminae have low-diversity planktonic foraminifera assemblages dominated by juveniles of the *r*-strategist *Heterohelicid*, rare benthic foraminifera, and a lack of bioturbation of features. These features and the high abundance of redox-sensitive trace metals are consistent with an environmentally stressed eutrophic environment in the water column, with suboxic-anoxic conditions at the seafloor (Brumsack, 2006; Eldrett et al., 2014, 2015b, 2017; Minisini et al., 2018).

Paleoclimate Proxies

PC1 is interpreted as a carbonate productivity signal, correlating well to the grayscale time series, with high Ca (low PC1) correlating to high grayscale values. PC1 displays dramatic swings between high and low values, suggesting rapid changes from anoxic to oxygenated conditions. Individual layers of foraminifera are responsible for the high magnitudes of these changes, many of which are interpreted to occur at a quasi-annual time scale (Fig. 1).

PC2 is interpreted as a seafloor redox signal, with Fe and S indicating the presence of pyrite, and with higher values usually (but not always) coinciding with dark laminae (Fig. 1).

Centennial to Millennial Paleoclimate Variability

The 80–100 yr and 200–230 yr cycles in the PC1 and grayscale spectra are reminiscent of similar cycles in the TSI spectrum attributed to Gleissberg and de Vries–Suess cycles,

respectively (Fig. 2). The M11 spectra also share a strong peak with a 400 yr cycle that has strong side lobes, suggesting some frequency instability; the TSI spectrum has two peaks at 477 yr and 351 yr, possibly a 400 yr cycle analogue. A strong 400 yr cycle appears in Holocene paleoclimate records in North America (Yu and Ito, 2002) and Asia (Wu et al., 2009), matched to atmospheric radiocarbon activity (a solar activity proxy) time series. The TSI, grayscale, and PC2 spectra (Fig. 2) also share a broad and low-power ~900–1000 yr cycle.

The M11 centennial-scale cycles suggest variations in water-column stratification, redox conditions, and marine community structure in response to changes in storm activity and intensity. Storms periodically reached sufficient intensity to trigger temporary destratification of the water column before returning to the stratified and anoxic environment that normally characterized this location (Fig. 3). The rapid, short-lived, ~0.5 W/m² decreases in the TSI time series mimic spikes in grayscale intensity (to white) and PC1 minima (Fig. 1). If Cenomanian and Holocene TSI variations were tantamount, lower TSI would be linked with light laminae and times of increased storminess and water-column ventilation. More intense storms could have been generated by stronger winds produced by an increased meridional thermal gradient and ocean-land thermal contrast when TSI was low (Weng, 2012).

TSI Forcing or Internal Variability?

The M11 spectra share multiple spectral features with the Holocene TSI spectrum. This

raises an interesting (two-part) question: If the M11 spectra reflect mid-Cenomanian internal climate variability, with greenhouse conditions and a very different ocean-continent configuration from the Holocene, should the same internal climate oscillations be expected as those in the Holocene? Alternatively, if the Holocene TSI time series has captured permanent features of solar variability, should they be expected to occur embedded in the deep-time paleoclimate record? A solar activity proxy time series for the mid-Cenomanian is needed to answer these questions. However, the affinity of the M11 spectra with the Holocene TSI spectrum hints at a solar forcing origin. Both the MCE and oceanic anoxic event 2 (OAE2) are proposed to have occurred during 2.4 m.y. eccentricity minima (Mitchell et al., 2008). One possibility is that during a 2.4 m.y. eccentricity minimum, seasonality was not as pronounced, and solar cycles may have a relatively stronger expression in the depositional environment. Testing this hypothesis requires exploring similar variability in other records that have a wide temporal and spatial coverage.

Semi-Precession and the Intertropical Convergence Zone

Semi-precession-scale climate change is predicted for intertropical locations from 23.5°S to 23.5°N that experience two insolation maxima per year (Berger and Loutre, 1997; Berger et al., 2006). Semi-precession cycling was discovered in the equatorial Pacific thermocline (0–300 m) over the last glacial cycle (Jian et al., 2020) and in Cretaceous ocean deposits at a paleolatitude of 30°S (Park et al., 1993). These discoveries

raise expectations for finding semi-precession signals in near-equatorial oceans throughout deep time. The strong 10,784 yr cycle in the PC2 redox proxy is one such candidate signal. The Iona core had a paleolatitude of 30°N, i.e., not intertropical; however, the southern KWIS gateway was connected to the intertropical Gulf of Mexico and beyond, so it was not immune to circulation originating from elsewhere. In fact, analysis of water-mass proxies in the Iona core indicate influence primarily from Tethyan oxygen minimum zone water masses arriving from the south (Arthur and Sageman, 2005; Eldrett et al., 2017). It is possible that these water masses carried a semi-precession signal with them from intertropical insolation forcing that affected dissolved oxygen.

CONCLUSIONS

Time-series analysis of multivariate paleoclimate proxy data obtained from a marine marlstone with interbedded dark/light laminae formed during the greenhouse climate just prior to and during the lower part of the mid-Cenomanian event (ca. 96.5 Ma) reveal significant (>99%) cycling with periods of 80–100 yr, 200–230 yr, and 400 yr reminiscent of Holocene solar activity cycles. Laminae deposition is interpreted to reflect variations in water-column stratification, redox conditions, and marine community structure influenced by solar activity–forced changes in storm activity and intensity. Such cycles may be unique to shallow seas, where bottom sediments are sensitive to storms. Principal component analysis of major elements measured by XRF core scanning further revealed

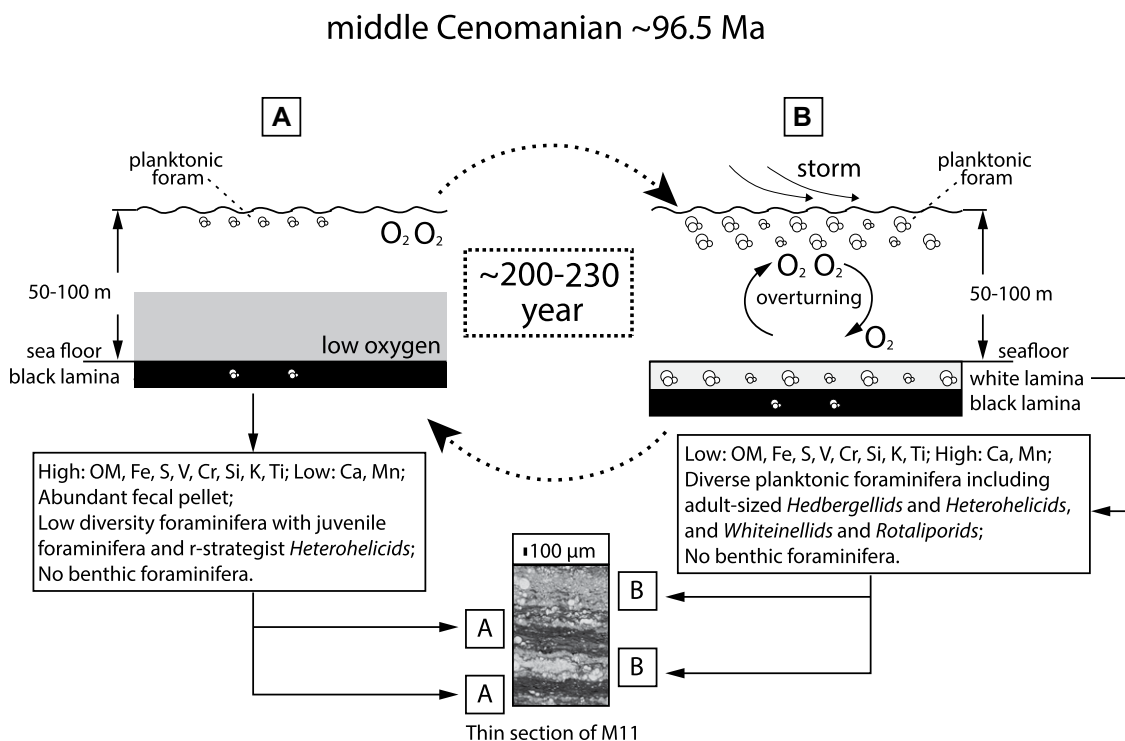


Figure 3. Depositional model for millimeter-scale dark (A) and light (B) laminae in the Cretaceous Western Interior Seaway (North America) during the middle Cenomanian for a 200–230 yr cycle. OM—organic matter. Stratigraphic position of the thin section is indicated in Figure 1 (at red arrow).

a strong 10,784 yr cycle in Fe and S, taken to be a redox proxy that records the incursion of Tethyan oxygen minimum zone water sources.

ACKNOWLEDGMENTS

This study was supported by the National Natural Science Foundation of China (grants 42172137, 41888101, 42050104 and 42050102), the Everest Scientific Research Program of Chengdu University of Technology (grant 2020ZF11402), and the U.S. National Science Foundation through grants EAR-1151438 (to S.R. Meyers) and OAC-1835717. We thank Ian Croudace for Itrax data. Finally, we thank David De Vleeschouwer, Lucas Lourens, Hong Ao, Nicolas Thibault, and four anonymous reviewers for their constructive comments.

REFERENCES CITED

- Arthur, M.A., and Sageman, B.B., 2005, Sea-level control on source-rock development: Perspectives from the Holocene Black Sea, the mid-Cretaceous Western Interior Basin of North America, and the Late Devonian Appalachian Basin, *in* Harris, N.B., ed., *The Deposition of Organic Carbon-Rich Sediments: Models, Mechanisms and Consequences*: Society for Sedimentary Geology (SEPM) Special Publication 82, p. 35–59, <https://doi.org/10.2110/pec.05.82.0035>.
- Berger, A., and Loutre, M.-L., 1997, Intertropical latitudes and precessional and half-precessional cycles: *Science*, v. 278, p. 1476–1478, <https://doi.org/10.1126/science.278.5342.1476>.
- Berger, A., Loutre, M.-L., and Mélice, J.-L., 2006, Equatorial insolation: From precession harmonics to eccentricity frequencies: *Climate of the Past*, v. 2, p. 131–136, <https://doi.org/10.5194/cp-2-131-2006>.
- Brumsack, H.-J., 2006, The trace metal content of recent organic carbon-rich sediments: Implications for Cretaceous black shale formation: *Palaeogeography, Palaeoclimatology, Palaeoecology*, v. 232, p. 344–361, <https://doi.org/10.1016/j.palaeo.2005.05.011>.
- Dijkstra, H.A., and von der Heydt, A.S., 2017, Basic mechanisms of centennial climate variability: *Past Global Changes Magazine*, v. 25, p. 150–151, <https://doi.org/10.22498/pages.25.3.150>.
- Eldrett, J.S., Minisini, D., and Bergman, S.C., 2014, Decoupling of the carbon cycle during ocean anoxic event 2: *Geology*, v. 42, p. 567–570, <https://doi.org/10.1130/G35520.1>.
- Eldrett, J.S., Ma, C., Bergman, S.C., Lutz, B., Gregory, F.J., Dodsworth, P., Phipps, M., Hardas, P., Minisini, D., Ozkan, A., Ramezani, J., Bowring, S.A., Kamo, S.L., Ferguson, K., Macaulay, C., and Kelly, A.E., 2015a, An astronomically calibrated stratigraphy of the Cenomanian, Turonian and earliest Coniacian from the Cretaceous Western Interior Seaway, USA: Implications for global chronostratigraphy: *Cretaceous Research*, v. 56, p. 316–344, <https://doi.org/10.1016/j.cretres.2015.04.010>.
- Eldrett, J.S., Ma, C., Bergman, S.C., Ozkan, A., Minisini, D., Lutz, B., Jackett, S.-J., Macaulay, C., and Kelly, A.E., 2015b, Origin of limestone–marlstone cycles: Astronomic forcing of organic-rich sedimentary rocks from the Cenomanian to early Coniacian of the Cretaceous Western Interior Seaway, USA: *Earth and Planetary Science Letters*, v. 423, p. 98–113, <https://doi.org/10.1016/j.epsl.2015.04.026>.
- Eldrett, J.S., Dodsworth, P., Bergman, S.C., Wright, M., and Minisini, D., 2017, Water-mass evolution in the Cretaceous Western Interior Seaway of North America and equatorial Atlantic: *Climate of the Past*, v. 13, p. 855–878, <https://doi.org/10.5194/cp-13-855-2017>.
- Gebhardt, H., Friedrich, O., Schenk, B., Fox, L., Hart, M., and Wagreich, M., 2010, Paleoclimatographic changes at the northern Tethyan margin during the Cenomanian–Turonian oceanic anoxic event (OAE-2): *Marine Micropaleontology*, v. 77, p. 25–45, <https://doi.org/10.1016/j.marmicro.2010.07.002>.
- Jian, Z., Wang, Y., Dang, H., Lea, D.W., Liu, Z., Jin, H., and Yin, Y., 2020, Half-precessional cycle of thermocline temperature in the western equatorial Pacific and its bihemispheric dynamics: *Proceedings of the National Academy of Sciences of the United States of America*, v. 117, p. 7044–7051, <https://doi.org/10.1073/pnas.1915510117>.
- Ma, C., Meyers, S.R., Hinnov, L.A., Eldrett, J.S., Bergman, S.C., and Minisini, D., 2020, A method to decipher the time distribution in astronomically forced sedimentary couplets: *Marine and Petroleum Geology*, v. 118, 104399, <https://doi.org/10.1016/j.marpetgeo.2020.104399>.
- Minisini, D., Eldrett, J., Bergman, S.C., and Forkner, R., 2018, Chronostratigraphic framework and depositional environments in the organic-rich, mudstone-dominated Eagle Ford Group, Texas, USA: *Sedimentology*, v. 65, p. 1520–1557, <https://doi.org/10.1111/sed.12437>.
- Mitchell, R.N., Bice, D.M., Montanari, A., Cleaveland, L.C., Christianson, K.T., Coccioni, R., and Hinnov, L.A., 2008, Oceanic anoxic cycles? Orbital prelude to the Bonarelli level (OAE 2): *Earth and Planetary Science Letters*, v. 267, p. 1–16, <https://doi.org/10.1016/j.epsl.2007.11.026>.
- Myhre, G.D., et al., 2013, Chapter 8: Anthropogenic and natural radiative forcing, *in* Stocker, T.F., et al., eds., *Climate Change 2013: The Physical Science Basis. Contribution of Working Group I to the Fifth Assessment Report of the Intergovernmental Panel on Climate Change*: Cambridge, UK, Cambridge University Press, p. 659–740.
- O'Brien, C.L., Robinson, S.A., Pancost, R.D., Damsté, J.S.S., Schouten, S., Lunt, D.J., Alsenz, H., Bornemann, A., Bottini, C., and Brassell, S.C., 2017, Cretaceous sea-surface temperature evolution: Constraints from TEX86 and planktonic foraminiferal oxygen isotopes: *Earth-Science Reviews*, v. 172, p. 224–247, <https://doi.org/10.1016/j.earscirev.2017.07.012>.
- Park, J., d'Hondt, S.L., King, J.W., and Gibson, C., 1993, Late Cretaceous precessional cycles in double time: A warm-Earth Milankovitch response: *Science*, v. 261, p. 1431–1434, <https://doi.org/10.1126/science.261.5127.1431>.
- Seidenglanz, A., Prange, M., Varma, V., and Schulz, M., 2012, Ocean temperature response to idealized Gleissberg and de Vries solar cycles in a comprehensive climate model: *Geophysical Research Letters*, v. 39, L22602, <https://doi.org/10.1029/2012GL053624>.
- Steinhilber, F., Abreu, J.A., Beer, J., Brunner, I., Christl, M., Fischer, H., Heikkilä, U., Kubik, P.W., Mann, M., McCracken, K.G., Miller, H., Miyahara, H., Oerter, H., and Wilhelms, F., 2013, 9,400 years of cosmic radiation and solar activity from ice cores and tree rings: *Proceedings of the National Academy of Sciences of the United States of America*, v. 109, p. 5967–5971, <https://doi.org/10.1073/pnas.1118965109>.
- Sun, X., Zhang, T., Sun, Y., Milliken, K.L., and Sun, D., 2016, Geochemical evidence of organic matter source input and depositional environments in the lower and upper Eagle Ford Formation, south Texas: *Organic Geochemistry*, v. 98, p. 66–81, <https://doi.org/10.1016/j.orggeochem.2016.05.018>.
- Usoskin, I.G., 2017, A history of solar activity over millennia: *Living Reviews in Solar Physics*, v. 14, article 3, <https://doi.org/10.1007/s41116-017-0006-9>.
- von der Heydt, A.S., Ashwin, P., Camp, C.D., Crucifix, M., Dijkstra, H.A., Ditlevsen, P., and Lenton, T.M., 2021, Quantification and interpretation of the climate variability record: *Global and Planetary Change*, v. 197, 103399, <https://doi.org/10.1016/j.gloplacha.2020.103399>.
- Wang, Y., Huang, C., Sun, B., Quan, C., Wu, J., and Lin, Z., 2014, Paleo-CO₂ variation trends and the Cretaceous greenhouse climate: *Earth-Science Reviews*, v. 129, p. 136–147, <https://doi.org/10.1016/j.earscirev.2013.11.001>.
- Weng, H., 2012, Impacts of multi-scale solar activity on climate. Part I: Atmospheric circulation patterns and climate extremes: *Advances in Atmospheric Sciences*, v. 29, p. 867–886, <https://doi.org/10.1007/s00376-012-1238-1>.
- Wu, J., Yu, Z., Zeng, H., and Wang, N., 2009, Possible solar forcing of 400-year wet–dry climate cycles in northwestern China: *Climatic Change*, v. 96, p. 473–482, <https://doi.org/10.1007/s10584-009-9604-4>.
- Yu, Z., and Ito, E., 2002, The 400-year wet–dry climate cycle in interior North America and its solar connection, *in* West, G.J., and Blomquist, N.L., eds., *Proceedings of the Nineteenth Annual Pacific Climate (PACCLIM) Workshop*, Pacific Grove, 3–6 March 2002, Sacramento: California Department of Water Resources, Interagency Ecological Program for the San Francisco Estuary, Technical Report 71, p. 159–163.

Printed in USA